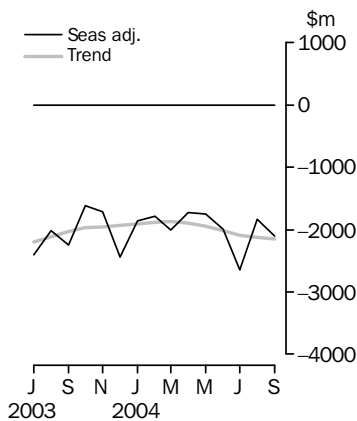


# INTERNATIONAL TRADE IN GOODS AND SERVICES

AUSTRALIA

EMBARGO: 11.30AM (CANBERRA TIME) MON 1 NOV 2004

## Balance on goods and services



## KEY FIGURES

	July 2004	August 2004	September 2004	Aug 04 to Sep 04
	\$m	\$m	\$m	% change
<b>TREND</b>				
Balance on goods & services	-2 087	-2 130	-2 153	..
Credits (exports of goods & services)	13 118	13 239	13 299	—
Debits (imports of goods & services)	15 205	15 369	15 452	1
<b>SEASONALLY ADJUSTED</b>				
Balance on goods & services	-2 642	-1 837	-2 105	..
Credits (exports of goods & services)	12 935	12 880	13 368	4
Debits (imports of goods & services)	15 577	14 717	15 473	5

.. not applicable

— nil or rounded to zero (including null cells)

## KEY POINTS

### TREND ESTIMATES

- The provisional trend estimate of the balance on goods and services was a deficit of \$2,153m in September 2004, an increase of \$23m on the deficit in August.
- Goods and services credits rose \$60m to \$13,299m. Non-rural and other goods rose \$63m (1%), while rural goods fell \$16m (1%). Services credits rose \$13m.
- Goods and services debits rose \$83m (1%) to \$15,452m. Intermediate and other goods rose \$97m (2%), while capital goods fell \$11m and consumption goods fell \$4m. Services debits rose \$1m.

### SEASONALLY ADJUSTED ESTIMATES

- In seasonally adjusted terms, the balance on goods and services was a deficit of \$2,105m in September, an increase of \$268m on the deficit in August.
- Goods and services credits rose \$488m (4%) to \$13,368m. Non-rural and other goods rose \$346m (4%) and rural goods rose \$65m (3%). Services credits rose \$77m (3%).
- Goods and services debits rose \$756m (5%) to \$15,473m. Intermediate and other goods rose \$485m (9%), consumption goods rose \$296m (8%), while capital goods fell \$109m (4%). Services debits rose \$84m (3%).

### ORIGINAL ESTIMATES

- In original terms, the September balance on goods and services was a deficit of \$3,219m, an increase of \$1,035m on the deficit in August. Goods and services credits fell marginally, while goods and services debits rose \$1,033m (7%).
- In the three months to September, exports of non-rural and other goods were up \$2.7b (12%) and rural goods were up \$1.7b (33%) on the corresponding period in 2003–04.

## INQUIRIES

- For further information about these and related statistics, contact the National Information and Referral Service on 1300 135 070 or Artur Andrysiak on (02) 6252 6792.

# NOTES

## FORTHCOMING ISSUES

ISSUE	RELEASE DATE
October 2004	10 December 2004
November 2004	11 January 2005
December 2004	1 February 2005
January 2005	28 February 2005
February 2005	5 April 2005
March 2005	5 May 2005



## REVISIONS

Revisions were made to incorporate the latest available data relating to merchandise trade and the quarterly Survey of International Trade in Services. In original terms, these revisions have:

- decreased the deficit on goods and services for the two months to August 2004 by \$127m
- decreased the deficit on goods and services for 2003-04 by \$91m.

## CHANGES TO FORTHCOMING ISSUES

Seasonally adjusted and trend estimates of the balance on goods and services will be revised in the October 2004 issue of this publication as a result of the annual seasonal re-analysis. Forward seasonal factors are released as part of the electronic versions of the relevant publications (see 5368.0, Table 20, for monthly seasonal factors, and 5302.0, Table 95, for quarterly seasonal factors).

As foreshadowed in the August 2004 issue of this publication, commencing with the October 2004 issue, the ABS will introduce concurrent seasonal adjustment to improve the accuracy and consistency of the seasonally adjusted estimates. When the concurrent seasonal adjustment method is applied to the latest data up to September 2004, the magnitude of the balance on goods and services is of a similar level to that obtained using the forward factors method. However, the rise between August and September for goods and services credits is one percentage point below that obtained by using the forward factor method and the rise for goods and services debits is two percentage points below that obtained by using the forward factor method.

## FEATURE ARTICLES

Feature articles on Australia's international trade in services by partner country and international trade in services by state for the financial year 2003-04 will be released on the ABS web site <<http://www.abs.gov.au>> concurrently with this publication. Comparable data for calendar year 2003 were released on 4 May 2004.

To access these articles on the web site select: *Themes* then *International Trade* then *Topics of Interest*

Dennis Trewin  
Australian Statistician

# CONTENTS

page

Tables on AusStats	4
--------------------	---

## ANALYSIS

Analysis and comments	5
-----------------------	---

## TABLES

### INTERNATIONAL TRADE IN GOODS AND SERVICES – BALANCE OF PAYMENTS BASIS

<b>1</b> Goods and services, summary, seasonally adjusted and trend	10
<b>2</b> Goods and services, summary, original	11
<b>3</b> Goods credits, original	12
<b>4</b> Goods debits, original	13
<b>5</b> Services, summary, original	14
<b>6</b> Services, summary, seasonally adjusted and trend	15
<b>7</b> Services, original, quarterly	16

### INTERNATIONAL MERCHANDISE TRADE – RECORDED TRADE BASIS

<b>8</b> International merchandise exports, by commodity	17
<b>9</b> International merchandise imports, by commodity	20
<b>10</b> International merchandise trade, by country and country groups	23
<b>11</b> International merchandise trade, by state	24

### OTHER TABLES

<b>12</b> Period average exchange rates per Australian Dollar	25
---	----

## OTHER INFORMATION

Explanatory Notes	26
Appendix – Related articles	29

## TABLES ON AUSSTATS

---

### TABLES AVAILABLE ON AUSSTATS

Data available on the ABS web site <<http://www.abs.gov.au>> include:

- longer time series of all tables contained in this publication
- additional tables listed below:

13 Merchandise exports by Broad Economic Category (BEC)

14 Merchandise exports by industry of origin (ANZSIC)

15 Merchandise imports by Broad Economic Category (BEC)

16 Merchandise imports by Balance of Payments Broad Economic Category (BoPBEC)

17 Merchandise imports by industry of origin (ANZSIC)

18 Merchandise exports, state by country and country groups

19 Merchandise imports, state by country and country groups

20 Monthly forward seasonal adjustment factors

## ANALYSIS AND COMMENTS

### BALANCE ON GOODS AND SERVICES

The trend estimate of the balance on goods and services in September 2004 was a deficit of \$2,153m, an increase of \$23m on the deficit in August.

In seasonally adjusted terms, the balance on goods and services in September 2004 was a deficit of \$2,105m, an increase of \$268m on the deficit in August.

The sum of the seasonally adjusted balances for the three months to September 2004 was a deficit of \$6,584m, an increase of \$1,111m on the deficit of \$5,473m for the three months to June 2004. However, if the more detailed seasonal factors used in compiling quarterly Balance of Payments are applied, the September quarter 2004 deficit was \$6,440m, an increase of \$912m on the revised June quarter 2004 deficit of \$5,528m.

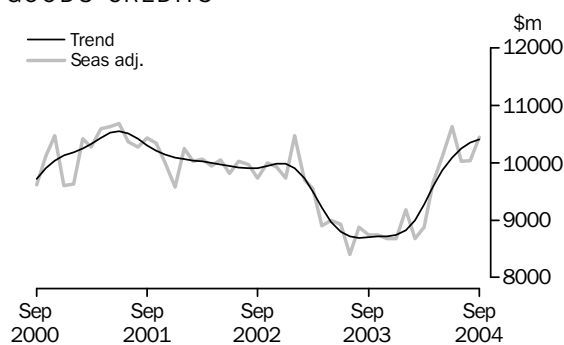
### EXPORTS OF GOODS AND SERVICES

The trend estimate of goods and services credits rose \$60m in September to \$13,299m.

In seasonally adjusted terms, goods and services credits rose \$488m (4%) in September to \$13,368m. Non-rural and other goods rose \$346m (4%), services credits rose \$77m (3%) and rural goods rose \$65m (3%).

#### Exports of goods

#### GOODS CREDITS



#### RURAL GOODS

The trend estimate of rural goods exports fell \$16m (1%) to \$2,433m.

In seasonally adjusted terms, rural goods rose \$65m (3%) to \$2,352m.

In original terms, rural goods rose \$1m to \$2,295m.

Movements in the original series contributing to the rise in seasonally adjusted terms were:

- an adjustment made as part of the regular seasonal adjustment process to take into account different trading day patterns in August and September, which contributed about 2 percentage points towards the overall rise
- wool and sheepskins, up \$81m (43%), compared with an average August to September rise of 19% over the previous three years
- cereal grains and cereal preparations, up \$22m (4%), in contrast to an average August to September fall of 2% over the previous three years
- meat and meat preparations, up \$58m (11%), compared with an average August to September rise of 7% over the previous three years.

Partly offsetting these effects were exports of other rural, down \$160m (15%), compared with an average August to September fall of 8% over the previous three years.

## ANALYSIS AND COMMENTS *continued*

### Exports of goods *continued*

#### NON-RURAL AND OTHER GOODS

The trend estimate of non-rural and other goods exports rose \$63m (1%) to \$7,973m.

In seasonally adjusted terms, non-rural and other goods rose \$346m (4%) to \$8,092m.

In original terms, non-rural and other goods rose \$102m (1%) to \$8,250m.

Movements in the original series contributing to the rise in seasonally adjusted terms were:

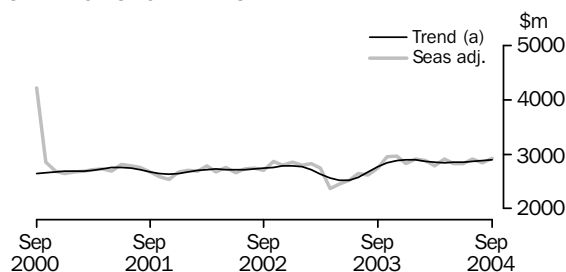
- an adjustment made as part of the regular seasonal adjustment process to take into account different trading day patterns in August and September, which contributed about 6 percentage points towards the overall rise
- other goods, up \$100m (18%), in contrast to an average August to September fall of 11% over the previous three years
- transport equipment, up \$46m (12%), in contrast to an average August to September fall of 11% over the previous three years
- machinery, up \$31m (5%), in contrast to an average August to September fall of 5% over the previous three years.

Partly offsetting these effects were:

- coal, coke and briquettes, down \$172m (12%), in contrast to an average August to September rise of 2% over the previous three years
- metal ores and minerals, down \$43m (3%), compared with an average August to September fall of 1% over the previous three years.

### Exports of services

#### SERVICES CREDITS



(a) Trend estimates exclude the impact of the Olympics in September and October 2000.

In trend terms, services credits rose \$13m to \$2,893m.

Seasonally adjusted, services credits rose \$77m (3%) to \$2,924m.

Movements in the seasonally adjusted components contributing to this rise were:

- travel services, up \$48m (3%)
- passenger and other transportation services, up \$14m (2%)
- other services, up \$14m (2%).

Seasonally adjusted, tourism related services credits rose \$53m (3%) to \$1,812m.

## ANALYSIS AND COMMENTS *continued*

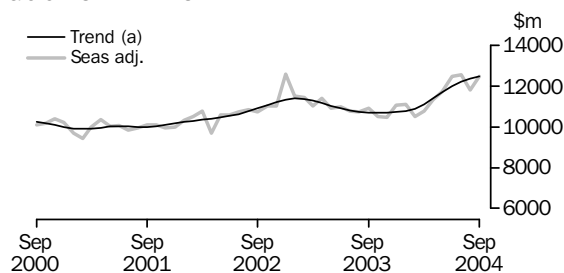
### IMPORTS OF GOODS AND SERVICES

The trend estimate of goods and services debits rose \$83m (1%) in September to \$15,452m.

In seasonally adjusted terms, goods and services debits rose \$756m (5%) to \$15,473m. Intermediate and other goods rose \$485m (9%), consumption goods rose \$296m (8%) and services debits rose \$84m (3%), while capital goods fell \$109m (4%).

#### *Imports of goods*

### GOODS DEBITS



(a) Trend estimates exclude abnormal imports of aircraft in December 2002.

### CONSUMPTION GOODS

The trend estimate of imports of consumption goods fell \$4m to \$3,880m.

In seasonally adjusted terms, imports of consumption goods rose \$296m (8%) to \$3,954m.

In original terms, imports of consumption goods rose \$437m (11%) to \$4,376m.

Movements in the original series contributing to the rise in seasonally adjusted terms were:

- consumption goods n.e.s., up \$127m (10%), largely due to increased imports of medicaments, compared with an average August to September rise of 1% over the previous three years
- non-industrial transport equipment, up \$222m (25%), compared with an average August to September rise of 13% over the previous three years
- textiles, clothing and footwear, down \$17m (3%), compared with an average August to September fall of 13% over the previous three years.

Partly offsetting these effects were food and beverages, up \$17m (4%), compared with an average August to September rise of 6% over the previous three years.

### CAPITAL GOODS

The trend estimate of imports of capital goods fell \$11m to \$3,010m.

In seasonally adjusted terms, imports of capital goods fell \$109m (4%) to \$2,779m.

In original terms, imports of capital goods rose \$78m (3%) to \$3,020m.

Movements in the original series contributing to the fall in seasonally adjusted terms were:

- an adjustment made as part of the regular seasonal adjustment process to take into account different trading day patterns in August and September, which contributed about 3 percentage points towards the overall fall

## ANALYSIS AND COMMENTS *continued*

### *Imports of goods continued*

#### CAPITAL GOODS *continued*

- civil aircraft, down \$13m (11%), in contrast to strong August to September rises over the previous three years
- telecommunications equipment, down \$38m (9%), in contrast to an average August to September rise of 10% over the previous three years
- capital goods n.e.s., down \$32m (8%), in contrast to an average August to September rise of 1% over the previous three years.

Partly offsetting these effects were:

- machinery and industrial equipment, up \$36m (3%), in contrast to an average August to September fall of 12% over the previous three years
- industrial transport equipment n.e.s., up \$65m (18%), compared with an average August to September rise of 2% over the previous three years.

#### INTERMEDIATE AND OTHER GOODS

The trend estimate of imports of intermediate and other goods rose \$97m (2%) to \$5,579m.

In seasonally adjusted terms, intermediate and other goods imports rose \$485m (9%) to \$5,739m.

In original terms, imports of intermediate and other goods rose \$290m (5%) to \$5,723m.

Movements in the original series contributing to the rise in seasonally adjusted terms were:

- fuels and lubricants, up \$211m (21%), due to increased prices and volumes, in contrast to an average August to September fall of 7% over the previous three years
- an adjustment made as part of the regular seasonal adjustment process to take into account different trading day patterns in August and September, which contributed about 3 percentage points towards the overall rise
- parts for transport equipment, up \$33m (6%), in contrast to an average August to September fall of 8% over the previous three years
- other merchandise goods, up \$51m (60%), in contrast to an average August to September fall of 9% over the previous three years
- organic and inorganic chemicals, up \$21m (8%), in contrast to an average August to September fall of 13% over the previous three years.

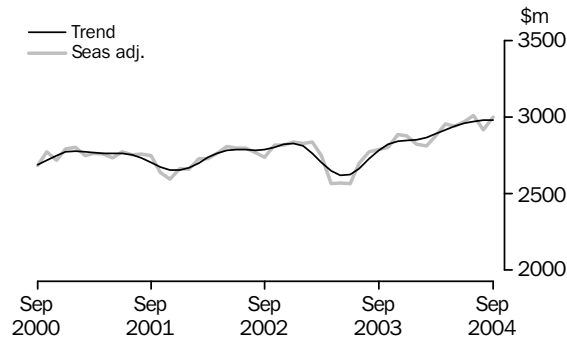
Partly offsetting these effects were:

- processed industrial supplies n.e.s., down \$26m (2%), in contrast to an average August to September rise of 3% over the previous three years
- other goods, down \$19m (4%), in contrast to an average August to September rise of 8% over the previous three years.



Imports of services

SERVICES DEBITS



In trend terms, services debits rose \$1m to \$2,983m.

Seasonally adjusted, services debits rose \$84m (3%) to \$3,001m.

Movements in the seasonally adjusted components contributing to this rise were:

- freight services, up \$75m (13%)
- travel services, up \$31m (3%).

Partly offsetting these effects were:

- other services, down \$17m (2%)
- passenger and other transportation services, down \$5m (1%).

Seasonally adjusted, tourism related services debits fell \$3m to \$1,469m.

GOODS AND SERVICES(a), Summary: **Seasonally adjusted and trend**

Months	BALANCE	CREDITS					DEBITS					
	<i>On goods and services</i>	<i>Total goods and services</i>	<i>Total goods</i>	<i>Rural goods (b)</i>	<i>Non-rural and other goods (b)</i>	<i>Total services</i>	<i>Total goods and services</i>	<i>Total goods</i>	<i>Consumption goods</i>	<i>Capital goods</i>	<i>Intermediate and other goods</i>	<i>Total services</i>
	\$m	\$m	\$m	\$m	\$m	\$m	\$m	\$m	\$m	\$m	\$m	\$m
<b>SEASONALLY ADJUSTED</b>												
<b>2003</b>												
July	-2 410	11 050	8 408	1 755	6 653	2 642	-13 460	-10 758	-3 320	-2 637	-4 801	-2 702
August	-2 023	11 495	8 883	1 697	7 186	2 612	-13 518	-10 744	-3 329	-2 635	-4 780	-2 774
September	-2 242	11 490	8 740	1 858	6 882	2 750	-13 732	-10 942	-3 600	-2 568	-4 774	-2 790
October	-1 615	11 688	8 737	1 881	6 856	2 951	-13 303	-10 500	-3 458	-2 433	-4 609	-2 803
November	-1 707	11 648	8 679	1 789	6 890	2 969	-13 355	-10 469	-3 415	-2 616	-4 438	-2 886
December	-2 437	11 501	8 680	1 867	6 813	2 821	-13 938	-11 059	-3 545	-2 774	-4 740	-2 879
<b>2004</b>												
January	-1 855	12 090	9 184	2 140	7 044	2 906	-13 945	-11 120	-3 768	-2 666	-4 686	-2 825
February	-1 780	11 563	8 681	2 118	6 563	2 882	-13 343	-10 529	-3 344	-2 384	-4 801	-2 814
March	-2 005	11 663	8 874	2 007	6 867	2 789	-13 668	-10 788	-3 524	-2 546	-4 718	-2 880
April	-1 732	12 575	9 660	2 253	7 407	2 915	-14 307	-11 350	-3 715	-2 648	-4 987	-2 957
May	-1 752	12 935	10 110	2 473	7 637	2 825	-14 687	-11 743	-3 885	-2 689	-5 169	-2 944
June	-1 989	13 455	10 629	2 662	7 967	2 826	-15 444	-12 472	-4 015	-3 189	-5 268	-2 972
July	-2 642	12 935	10 027	2 466	7 561	2 908	-15 577	-12 566	-3 833	-3 252	-5 481	-3 011
August	-1 837	12 880	10 033	2 287	7 746	2 847	-14 717	-11 800	-3 658	-2 888	-5 254	-2 917
September	-2 105	13 368	10 444	2 352	8 092	2 924	-15 473	-12 472	-3 954	-2 779	-5 739	-3 001
<b>TREND ESTIMATES</b>												
<b>2003</b>												
July	-2 199	11 295	8 712	1 757	6 955	2 583	-13 494	-10 828	-3 422	-2 608	-4 798	-2 666
August	-2 110	11 370	8 692	1 759	6 933	2 678	-13 480	-10 753	-3 428	-2 596	-4 729	-2 727
September	-2 028	11 476	8 700	1 785	6 915	2 776	-13 504	-10 718	-3 446	-2 598	-4 674	-2 786
October	-1 973	11 564	8 714	1 828	6 886	2 850	-13 537	-10 711	-3 473	-2 598	-4 640	-2 826
November	-1 951	11 610	8 720	1 877	6 843	2 890	-13 561	-10 718	-3 501	-2 595	-4 622	-2 843
December	-1 933	11 640	8 738	1 929	6 809	2 902	-13 573	-10 723	-3 514	-2 580	-4 629	-2 850
<b>2004</b>												
January	-1 906	11 711	8 817	1 995	6 822	2 894	-13 617	-10 762	-3 530	-2 563	-4 669	-2 855
February	-1 884	11 873	8 999	2 086	6 913	2 874	-13 757	-10 889	-3 571	-2 567	-4 751	-2 868
March	-1 876	12 130	9 274	2 197	7 077	2 856	-14 006	-11 115	-3 637	-2 618	-4 860	-2 891
April	-1 891	12 434	9 585	2 306	7 279	2 849	-14 325	-11 409	-3 713	-2 711	-4 985	-2 916
May	-1 941	12 722	9 871	2 386	7 485	2 851	-14 663	-11 720	-3 780	-2 826	-5 114	-2 943
June	-2 018	12 955	10 096	2 433	7 663	2 859	-14 973	-12 009	-3 832	-2 930	-5 247	-2 964
July	-2 087	13 118	10 251	2 452	7 799	2 867	-15 205	-12 231	-3 865	-2 994	-5 372	-2 974
August	-2 130	13 239	10 359	2 449	7 910	2 880	-15 369	-12 387	-3 884	-3 021	-5 482	-2 982
September	-2 153	13 299	10 406	2 433	7 973	2 893	-15 452	-12 469	-3 880	-3 010	-5 579	-2 983

(a) For sign conventions, see paragraph 9 of the Explanatory Notes.

(b) For all time periods, estimates for sugar, sugar preparations and honey are included in Non-rural and other goods.

## GOODS AND SERVICES (a), Summary: Original

	BALANCE	CREDITS					DEBITS					
	On goods and services	Total goods and services	Total goods	Rural goods(b)	Non-rural and other goods(b)	Total services	Total goods and services	Total goods	Con- sumption goods	Capital goods	Inter- mediate and other goods	Total services
FINANCIAL YEAR												
<b>2001-02</b>	<b>-1 373</b>	153 200	120 950	30 085	90 865	32 250	-154 573	-121 942	-37 422	-27 208	-57 312	-32 631
<b>2002-03</b>	<b>-18 876</b>	148 293	115 800	25 484	90 316	32 493	-167 169	-134 278	-41 228	-31 554	-61 496	-32 891
<b>2003-04</b>	<b>-23 729</b>	143 396	109 438	24 511	84 927	33 958	-167 125	-132 873	-42 916	-32 009	-57 948	-34 252
MONTHS												
<b>2003</b>												
July	<b>-2 302</b>	11 648	8 539	1 704	6 835	3 109	-13 950	-11 107	-3 577	-2 822	-4 708	-2 843
August	<b>-1 812</b>	11 687	9 190	1 705	7 485	2 497	-13 499	-10 669	-3 444	-2 509	-4 716	-2 830
September	<b>-3 182</b>	11 462	9 016	1 836	7 180	2 446	-14 644	-11 606	-3 982	-2 675	-4 949	-3 038
October	<b>-3 117</b>	11 923	9 097	1 948	7 149	2 826	-15 040	-12 023	-4 121	-2 743	-5 159	-3 017
November	<b>-1 561</b>	11 588	8 713	1 845	6 868	2 875	-13 149	-10 365	-3 540	-2 545	-4 280	-2 784
December	<b>-1 932</b>	12 072	9 284	2 097	7 187	2 788	-14 004	-11 143	-3 517	-2 836	-4 790	-2 861
<b>2004</b>												
January	<b>-1 767</b>	11 242	7 968	1 868	6 100	3 274	-13 009	-10 090	-3 223	-2 392	-4 475	-2 919
February	<b>-178</b>	11 944	8 315	2 090	6 225	3 629	-12 122	-9 577	-3 092	-2 029	-4 456	-2 545
March	<b>-2 270</b>	12 015	9 238	2 139	7 099	2 777	-14 285	-11 518	-3 684	-2 670	-5 164	-2 767
April	<b>-1 744</b>	12 089	9 374	2 180	7 194	2 715	-13 833	-10 968	-3 486	-2 481	-5 001	-2 865
May	<b>-1 386</b>	12 576	10 140	2 515	7 625	2 436	-13 962	-11 148	-3 459	-2 701	-4 988	-2 814
June	<b>-2 478</b>	13 150	10 564	2 584	7 980	2 586	-15 628	-12 659	-3 791	-3 606	-5 262	-2 969
July	<b>-2 018</b>	13 585	10 151	2 379	7 772	3 434	-15 603	-12 438	-3 993	-3 230	-5 215	-3 165
August	<b>-2 184</b>	13 132	10 442	2 294	8 148	2 690	-15 316	-12 314	-3 939	-2 942	-5 433	-3 002
September	<b>-3 219</b>	13 130	10 545	2 295	8 250	2 585	-16 349	-13 119	-4 376	-3 020	-5 723	-3 230
FINANCIAL YEAR TO DATE												
<b>3 months ended September</b>												
2003	<b>-7 296</b>	34 797	26 745	5 245	21 500	8 052	-42 093	-33 382	-11 003	-8 006	-14 373	-8 711
2004	<b>-7 421</b>	39 847	31 138	6 968	24 170	8 709	-47 268	-37 871	-12 308	-9 192	-16 371	-9 397

(a) For sign conventions, see paragraph 9 of the Explanatory Notes.

(b) For all time periods, estimates for sugar, sugar preparations and honey are included in Non-rural and other goods.

## GOODS CREDITS: Original

							3 MONTHS ENDED		Change
							SEPTEMBER		
	2001-02	2002-03	2003-04	Jul 2004	Aug 2004	Sep 2004	2003	2004	
	\$m	\$m	\$m	\$m	\$m	\$m	\$m	\$m	%
<b>Total goods credits</b>	<b>120 950</b>	<b>115 800</b>	<b>109 438</b>	<b>10 151</b>	<b>10 442</b>	<b>10 545</b>	<b>26 745</b>	<b>31 138</b>	<b>16.4</b>
<b>Rural goods</b>									
Meat and meat preparations	6 246	5 655	5 758	557	546	604	1 250	1 707	36.6
Cereal grains and cereal preparations	6 481	4 487	5 094	611	492	514	732	1 617	120.9
Wool and sheepskins	3 687	3 545	2 778	241	187	268	605	696	15.0
Other rural	13 671	11 797	10 881	970	1 069	909	2 658	2 948	10.9
<i>Total rural goods(a)</i>	<i>30 085</i>	<i>25 484</i>	<i>24 511</i>	<i>2 379</i>	<i>2 294</i>	<i>2 295</i>	<i>5 245</i>	<i>6 968</i>	<i>32.9</i>
<b>Non-rural goods</b>									
Metal ores and minerals	14 774	14 523	14 876	1 412	1 525	1 482	3 458	4 419	27.8
Coal, coke and briquettes	13 430	11 987	11 001	1 163	1 381	1 209	2 609	3 753	43.8
Other mineral fuels	10 940	11 049	8 766	895	902	950	2 558	2 747	7.4
Metals (excl. gold)	9 650	8 711	7 759	680	703	726	1 762	2 109	19.7
Machinery	7 999	7 362	6 835	627	618	649	1 817	1 894	4.2
Transport equipment	5 686	6 273	5 155	422	376	422	1 442	1 220	-15.4
Other manufactures	13 758	13 485	13 276	1 152	1 165	1 226	3 439	3 543	3.0
Other non-rural(a)	7 009	8 234	9 300	788	909	917	2 305	2 614	13.4
<i>Total non-rural goods(a)</i>	<i>83 246</i>	<i>81 624</i>	<i>76 968</i>	<i>7 139</i>	<i>7 579</i>	<i>7 581</i>	<i>19 390</i>	<i>22 299</i>	<i>15.0</i>
<b>Other goods</b>									
<i>Total other goods(b)</i>	<i>7 619</i>	<i>8 692</i>	<i>7 959</i>	<i>633</i>	<i>569</i>	<i>669</i>	<i>2 110</i>	<i>1 871</i>	<i>-11.3</i>

(a) For all time periods, estimates for sugar, sugar preparations and honey are included in Other non-rural.

(b) Includes non-monetary gold.

## GOODS DEBITS(a): Original

	3 MONTHS ENDED								
	SEPTEMBER								
	2001-02	2002-03	2003-04	Jul 2004	Aug 2004	Sep 2004	2003	2004	Change
	\$m	\$m	\$m	\$m	\$m	\$m	\$m	\$m	%
<b>Total goods debits</b>	<b>-121 942</b>	<b>-134 278</b>	<b>-132 873</b>	<b>-12 438</b>	<b>-12 314</b>	<b>-13 119</b>	<b>-33 382</b>	<b>-37 871</b>	<b>13.4</b>
Consumption goods									
Food and beverages, mainly for consumption	-4 687	-5 067	-5 167	-451	-473	-490	-1 269	-1 414	11.4
Household electrical items	-3 166	-3 657	-3 793	-373	-360	-391	-953	-1 124	17.9
Non-industrial transport equipment	-9 930	-11 302	-12 326	-1 075	-904	-1 126	-3 084	-3 105	0.7
Textiles, clothing and footwear	-4 849	-5 237	-5 078	-530	-548	-531	-1 403	-1 609	14.7
Toys, books and leisure goods	-3 494	-3 740	-3 593	-310	-339	-396	-1 008	-1 045	3.7
Consumption goods n.e.s.	-11 296	-12 225	-12 959	-1 254	-1 315	-1 442	-3 286	-4 011	22.1
<i>Total consumption goods</i>	<i>-37 422</i>	<i>-41 228</i>	<i>-42 916</i>	<i>-3 993</i>	<i>-3 939</i>	<i>-4 376</i>	<i>-11 003</i>	<i>-12 308</i>	<i>11.9</i>
Capital goods									
Machinery and industrial equipment	-9 502	-11 007	-11 064	-1 043	-1 147	-1 183	-2 769	-3 373	21.8
ADP equipment	-5 055	-4 908	-5 138	-479	-438	-498	-1 242	-1 415	13.9
Telecommunications equipment	-3 643	-3 619	-4 105	-405	-447	-409	-935	-1 261	34.9
Civil aircraft	-1 513	-3 887	-3 061	-465	-117	-104	-947	-686	-27.6
Industrial transport equipment n.e.s.	-3 613	-3 881	-4 035	-444	-371	-436	-940	-1 251	33.1
Capital goods n.e.s.	-3 882	-4 252	-4 606	-394	-422	-390	-1 173	-1 206	2.8
<i>Total capital goods</i>	<i>-27 208</i>	<i>-31 554</i>	<i>-32 009</i>	<i>-3 230</i>	<i>-2 942</i>	<i>-3 020</i>	<i>-8 006</i>	<i>-9 192</i>	<i>14.8</i>
Intermediate and other merchandise goods									
Food and beverages, mainly for industry	-577	-736	-625	-54	-53	-59	-171	-166	-2.9
Primary industrial supplies n.e.s.	-1 117	-1 220	-1 079	-80	-86	-99	-285	-265	-7.0
Fuels and lubricants	-8 823	-10 393	-9 917	-1 044	-1 002	-1 213	-2 172	-3 259	50.0
Parts for transport equipment	-6 827	-7 258	-6 548	-577	-571	-604	-1 763	-1 752	-0.6
Parts for ADP equipment	-2 159	-2 011	-1 812	-166	-155	-162	-486	-483	-0.6
Other parts for capital goods	-8 216	-8 605	-8 553	-752	-845	-853	-2 163	-2 450	13.3
Organic and inorganic chemicals	-3 447	-3 089	-3 048	-302	-254	-275	-675	-831	23.1
Paper and paperboard	-2 225	-2 326	-2 242	-199	-199	-200	-595	-598	0.5
Textile yarn and fabrics	-1 830	-1 839	-1 576	-143	-146	-133	-443	-422	-4.7
Iron and steel	-1 765	-1 960	-2 026	-192	-213	-197	-520	-602	15.8
Plastics	-2 182	-2 478	-2 177	-186	-193	-206	-543	-585	7.7
Processed industrial supplies n.e.s.	-11 441	-12 238	-12 029	-1 084	-1 171	-1 145	-2 883	-3 400	17.9
Other merchandise goods	-1 563	-1 710	-1 234	-68	-85	-136	-371	-289	-22.1
<i>Total intermediate and other merchandise goods</i>	<i>-52 172</i>	<i>-55 863</i>	<i>-52 866</i>	<i>-4 847</i>	<i>-4 973</i>	<i>-5 282</i>	<i>-13 070</i>	<i>-15 102</i>	<i>15.5</i>
Other goods									
<i>Total other goods(b)</i>	<i>-5 140</i>	<i>-5 633</i>	<i>-5 082</i>	<i>-368</i>	<i>-460</i>	<i>-441</i>	<i>-1 303</i>	<i>-1 269</i>	<i>-2.6</i>

(a) For sign conventions, see paragraph 9 of the Explanatory Notes.

(b) Includes non-monetary gold.

SERVICES (a)(b), Summary: **Original**

							3 MONTHS ENDED		Change
							SEPTEMBER		
	2001-02	2002-03	2003-04	Jul 2004	Aug 2004	Sep 2004	2003	2004	
	\$m	\$m	\$m	\$m	\$m	\$m	\$m	%	
<b>Credits</b>									
Freight	1 001	920	830	68	68	69	209	205	-1.9
Other transportation	6 664	6 538	6 783	595	594	597	1 575	1 786	13.4
Travel	15 645	15 452	17 108	2 019	1 276	1 154	3 990	4 449	11.5
Other services	8 940	9 583	9 237	752	752	765	2 278	2 269	-0.4
<b>Total services credits</b>	<b>32 250</b>	<b>32 493</b>	<b>33 958</b>	<b>3 434</b>	<b>2 690</b>	<b>2 585</b>	<b>8 052</b>	<b>8 709</b>	<b>8.2</b>
<b>Debits</b>									
Freight	-5 626	-5 808	-6 056	-566	-600	-653	-1 479	-1 819	23.0
Other transportation	-5 150	-5 152	-5 578	-565	-478	-518	-1 439	-1 561	8.5
Travel	-10 918	-11 012	-12 136	-1 187	-1 070	-1 198	-3 147	-3 455	9.8
Other services	-10 937	-10 919	-10 482	-847	-854	-861	-2 646	-2 562	-3.2
<b>Total services debits</b>	<b>-32 631</b>	<b>-32 891</b>	<b>-34 252</b>	<b>-3 165</b>	<b>-3 002</b>	<b>-3 230</b>	<b>-8 711</b>	<b>-9 397</b>	<b>7.9</b>
<b>Memorandum items:</b>									
Tourism related service credits(c)	19 800	19 503	21 081	2 350	1 606	1 487	4 913	5 443	10.8
Tourism related service debits(c)	-15 577	-15 691	-17 258	-1 708	-1 504	-1 676	-4 474	-4 888	9.3

(a) For sign conventions, see paragraph 9 of the Explanatory Notes.

(b) For more detailed trade in services by commodity, see table 7.

(c) For more detailed explanation of tourism related services, see paragraphs 15 and 16 of the Explanatory Notes.

## SERVICES (a), Summary: Seasonally Adjusted and Trend

	Dec 2003	Jan 2004	Feb 2004	Mar 2004	Apr 2004	May 2004	Jun 2004	Jul 2004	Aug 2004	Sep 2004
	\$m	\$m	\$m	\$m	\$m	\$m	\$m	\$m	\$m	\$m

## SEASONALLY ADJUSTED

**Credits**

Freight	69	63	63	64	73	74	75	69	68	69
Other transportation	581	597	527	546	621	592	599	605	590	604
Travel	1 399	1 466	1 537	1 406	1 440	1 387	1 396	1 474	1 429	1 477
Other services	772	780	755	773	781	772	756	760	760	774
<b>Total services credits</b>	<b>2 821</b>	<b>2 906</b>	<b>2 882</b>	<b>2 789</b>	<b>2 915</b>	<b>2 825</b>	<b>2 826</b>	<b>2 908</b>	<b>2 847</b>	<b>2 924</b>

**Debits**

Freight	-536	-482	-485	-509	-509	-554	-585	-578	-562	-637
Other transportation	-461	-453	-468	-484	-526	-472	-496	-496	-469	-464
Travel	-1 020	-1 025	-1 000	-1 010	-1 079	-1 065	-1 052	-1 091	-1 024	-1 055
Other services	-862	-865	-861	-877	-843	-853	-839	-846	-862	-845
<b>Total services debits</b>	<b>-2 879</b>	<b>-2 825</b>	<b>-2 814</b>	<b>-2 880</b>	<b>-2 957</b>	<b>-2 944</b>	<b>-2 972</b>	<b>-3 011</b>	<b>-2 917</b>	<b>-3 001</b>

**Memorandum items:**

Tourism related service credits(b)	1 783	1 797	1 814	1 752	1 790	1 758	1 802	1 821	1 759	1 812
Tourism related service debits(b)	-1 432	-1 429	-1 452	-1 481	-1 547	-1 500	-1 517	-1 518	-1 472	-1 469

## TREND

**Credits**

Freight	66	66	66	68	70	71	72	71	71	70
Other transportation	568	570	572	576	582	590	597	601	604	603
Travel	1 498	1 487	1 465	1 441	1 427	1 423	1 424	1 431	1 441	1 457
Other services	770	771	771	771	770	767	766	764	764	763
<b>Total services credits</b>	<b>2 902</b>	<b>2 894</b>	<b>2 874</b>	<b>2 856</b>	<b>2 849</b>	<b>2 851</b>	<b>2 859</b>	<b>2 867</b>	<b>2 880</b>	<b>2 893</b>

**Debits**

Freight	-491	-493	-500	-511	-525	-543	-563	-580	-596	-608
Other transportation	-460	-468	-477	-486	-491	-493	-491	-485	-479	-472
Travel	-1 015	-1 018	-1 025	-1 036	-1 047	-1 056	-1 061	-1 061	-1 059	-1 055
Other services	-884	-876	-866	-858	-853	-851	-849	-848	-848	-848
<b>Total services debits</b>	<b>-2 850</b>	<b>-2 855</b>	<b>-2 868</b>	<b>-2 891</b>	<b>-2 916</b>	<b>-2 943</b>	<b>-2 964</b>	<b>-2 974</b>	<b>-2 982</b>	<b>-2 983</b>

**Memorandum items:**

Tourism related service credits(b)	1 819	1 812	1 798	1 784	1 780	1 783	1 787	1 791	1 795	1 800
Tourism related service debits(b)	-1 435	-1 448	-1 467	-1 488	-1 503	-1 511	-1 510	-1 503	-1 494	-1 482

(a) For sign conventions, see paragraph 9 of the Explanatory Notes.

(b) For more detailed explanation of tourism related services, see paragraphs 15 and 16 of the Explanatory Notes.

	CREDITS				DEBITS			
	Dec Qtr	Mar Qtr	Jun Qtr	Sep Qtr	Dec Qtr	Mar Qtr	Jun Qtr	Sep Qtr
	2003	2004	2004	2004	2003	2004	2004	2004
	\$m	\$m	\$m	\$m	\$m	\$m	\$m	\$m
<b>Services</b>	<b>8 489</b>	<b>9 680</b>	<b>7 737</b>	<b>8 709</b>	<b>-8 662</b>	<b>-8 231</b>	<b>-8 648</b>	<b>-9 397</b>
Transportation services								
Passenger	1 751	1 767	1 690	1 786	-1 144	-1 112	-1 297	-1 332
Freight	211	189	221	205	-1 524	-1 431	-1 622	-1 819
Other	np	np	np	np	-187	-193	-206	-229
<i>Total transportation services</i>	<i>1 962</i>	<i>1 956</i>	<i>1 911</i>	<i>1 991</i>	<i>-2 855</i>	<i>-2 736</i>	<i>-3 125</i>	<i>-3 380</i>
Travel services								
Business	315	347	302	310	-709	-752	-700	-774
Personal								
Education-related	730	2 523	885	1 651	-142	-168	-142	-232
Other	3 110	2 613	2 293	2 488	-2 139	-2 047	-2 190	-2 449
Total personal	3 840	5 136	3 178	4 139	-2 281	-2 215	-2 332	-2 681
<i>Total travel services</i>	<i>4 155</i>	<i>5 483</i>	<i>3 480</i>	<i>4 449</i>	<i>-2 990</i>	<i>-2 967</i>	<i>-3 032</i>	<i>-3 455</i>
Communication services	228	191	183	189	-227	-189	-205	-193
Construction services	23	19	27	16	—	—	—	—
Insurance services	171	171	173	171	-218	-218	-220	-218
Financial services	249	249	248	251	-147	-147	-146	-146
Computer and information services	300	269	298	275	-289	-209	-256	-250
Royalties and license fees	145	142	166	155	-571	-478	-460	-480
Other business services								
Merchanting and other trade-related	101	161	201	149	-51	-45	-55	-50
Operational leasing	5	2	5	5	-241	-228	-192	-252
Miscellaneous business, professional and technical								
Legal, accounting, management consulting and public relations	122	92	130	132	-80	-72	-77	-85
Advertising, market research and public opinion polling	21	15	22	16	-34	-29	-53	-28
Research and development	95	81	91	95	-70	-48	-42	-42
Architectural, engineering and other technical services	160	126	127	136	-101	-68	-94	-66
Agriculture, mining and on-site processing	27	25	31	28	-39	-25	-23	-43
Services between affiliated enterprises n.i.e.	285	245	243	243	-267	-207	-204	-195
Other	93	85	72	79	-100	-94	-80	-114
Total miscellaneous business, professional and technical	803	669	716	729	-691	-543	-573	-573
<i>Total other business services</i>	<i>909</i>	<i>832</i>	<i>922</i>	<i>883</i>	<i>-983</i>	<i>-816</i>	<i>-820</i>	<i>-875</i>
Personal, cultural and recreational services								
Audiovisual and related services	40	60	26	50	-161	-206	-149	-187
Other personal, cultural and recreational services	109	82	72	71	-30	-71	-25	-39
<i>Total other personal, cultural and recreational services</i>	<i>149</i>	<i>142</i>	<i>98</i>	<i>121</i>	<i>-191</i>	<i>-277</i>	<i>-174</i>	<i>-226</i>
Government services n.i.e.	198	226	231	208	-191	-194	-210	-174
<b>Memorandum items:</b>								
Tourism related services(c)	5 234	6 558	4 376	5 443	-4 215	-4 161	-4 408	-4 888

— nil or rounded to zero (including null cells)

np not available for publication but included in totals where applicable, unless otherwise indicated

(a) For sign conventions, see paragraph 9 of Explanatory Notes.

(b) For more information see paragraph 13 and 14 of the Explanatory Notes.

(c) For more detailed explanation of tourism related services, see paragraphs 15 and 16 of the Explanatory Notes.



				Per cent of total merchandise exports(a)	3 MONTHS ENDED SEPTEMBER		
	Jul	Aug	Sep		.....		
	2004	2004	2004		2003	2004	
	\$m	\$m	\$m	%	\$m	\$m	
MAJOR COMMODITIES							
011	Meat of bovine animals	413	408	452	4.3	869	1 273
041	Wheat	427	319	351	3.4	457	1 097
268	Wool and other animal hair	215	164	237	2.3	534	616
281	Iron ore and concentrates	538	595	564	5.4	1 281	1 697
285	Aluminium ore and concentrates	377	314	380	3.6	869	1 072
321	Coal, not agglomerated	1 159	1 377	1 205	11.5	2 603	3 740
333	Crude petroleum oils	535	490	485	4.6	1 375	1 510
334	Refined petroleum oils	129	206	208	2.0	544	543
343	Natural gas	221	226	263	2.5	630	710
684	Aluminium	351	321	371	3.6	953	1 043
781	Passenger motor vehicles	205	219	259	2.5	718	682
971	Gold, non-monetary	507	360	508	4.9	1 413	1 375

## SECTION AND DIVISION OF THE SITC

0	Food and live animals(b)						
00	Live animals other than fish, crustaceans, molluscs and aquatic invertebrates	54	74	83	0.8	226	211
01	Meat and meat preparations	557	546	604	5.8	1 251	1 707
02	Dairy products and birds' eggs	171	183	186	1.8	441	540
03	Fish (not marine mammals), crustaceans, molluscs and aquatic invertebrates, and preparations thereof(b)	113	153	85	0.8	435	352
04	Cereals and cereal preparations(b)	611	492	514	4.9	732	1 617
05	Vegetables and fruit	132	136	124	1.2	351	393
06	Sugars, sugar preparations and honey(b)	13	27	22	0.2	47	62
07	Coffee, tea, cocoa, spices, and manufactures thereof	24	28	27	0.3	74	79
08	Feeding stuff for animals (excl. unmilled cereals)(b)	74	84	67	0.6	207	225
09	Miscellaneous edible products and preparations	40	40	45	0.4	128	125
	<i>Total food and live animals</i>	<i>1 790</i>	<i>1 762</i>	<i>1 757</i>	<i>16.8</i>	<i>3 893</i>	<i>5 309</i>
1	Beverages and tobacco						
11	Beverages	222	257	273	2.6	681	752
12	Tobacco and tobacco manufactures	11	8	8	0.1	18	27
	<i>Total beverages and tobacco</i>	<i>233</i>	<i>265</i>	<i>281</i>	<i>2.7</i>	<i>699</i>	<i>779</i>
2	Crude materials, inedible, except fuels(b)						
21	Hides, skins and furskins, raw(b)	56	60	68	0.6	158	184
22	Oil seeds and oleaginous fruits	50	64	22	0.2	73	136
23	Crude rubber (incl. synthetic and reclaimed)	1	2	2	—	5	5
24	Cork and wood	87	79	73	0.7	229	239
25	Pulp and waste paper	5	5	5	0.1	14	15
26	Textile fibres and their wastes (not manufactured into yarn or fabric)(b)	338	276	331	3.2	772	945
27	Crude fertilisers (excl. those of Division 56) and crude minerals (excl. coal, petroleum and precious stones)	35	35	35	0.3	114	105
28	Metalliferous ores and metal scrap(b)	1 377	1 490	1 447	13.8	3 339	4 314
29	Crude animal and vegetable materials, n.e.s.	26	29	24	0.2	63	79
	<i>Total crude materials, inedible, except fuels</i>	<i>1 975</i>	<i>2 039</i>	<i>2 008</i>	<i>19.2</i>	<i>4 767</i>	<i>6 022</i>
3	Mineral fuels, lubricants and related materials						
32	Coal, coke and briquettes	1 163	1 381	1 209	11.6	2 610	3 754
33	Petroleum, petroleum products and related materials	664	697	695	6.6	1 921	2 056
34	Gas, natural and manufactured	293	289	337	3.2	822	919
	<i>Total mineral fuels, lubricants and related materials</i>	<i>2 120</i>	<i>2 367</i>	<i>2 241</i>	<i>21.4</i>	<i>5 353</i>	<i>6 729</i>

— nil or rounded to zero (including null cells)

(b) Excludes exports commodities subject to a confidentiality restriction. These are included in Division 98.

(a) Per cent of total merchandise exports is calculated for the most recent month.

				Per cent of total merchandise exports(a)	3 MONTHS ENDED SEPTEMBER.....		
	Jul	Aug	Sep		2003	2004	
	2004	2004	2004				
	\$m	\$m	\$m	%	\$m	\$m	
SECTION AND DIVISION OF THE SITC							
4	Animal and vegetable oils, fats and waxes(b)						
41	Animal oils and fats	21	29	20	0.2	59	70
42	Fixed vegetable fats and oils, crude, refined or fractionated(b)	4	4	5	—	13	13
43	Fats and oils (processed), waxes and inedible mixtures or preparations, of animal or vegetable origin, n.e.s.	6	5	6	0.1	12	17
	<i>Total animal and vegetable oils, fats and waxes</i>	31	38	30	0.3	85	100
5	Chemicals and related products, n.e.s.(b)						
51	Organic chemicals(b)	12	9	19	0.2	30	39
52	Inorganic chemicals(b)	40	30	46	0.4	121	116
53	Dyeing, tanning and colouring materials	59	49	57	0.5	143	164
54	Medicinal and pharmaceutical products	247	232	201	1.9	617	680
55	Essential oils and resinoids and perfume materials; toilet, polishing and cleansing preparations	31	36	37	0.4	113	104
56	Fertilisers (excl. crude)	5	20	20	0.2	55	45
57	Plastics in primary forms(b)	17	19	22	0.2	55	59
58	Plastics in non-primary forms	26	24	23	0.2	59	74
59	Chemical materials and products, n.e.s.	47	51	47	0.5	162	145
	<i>Total chemicals and related products, n.e.s.</i>	485	469	473	4.5	1 354	1 428
6	Manufactured goods classified chiefly by material(b)						
61	Leather, leather manufactures, and dressed furskins, n.e.s.	39	45	47	0.4	133	131
62	Rubber manufactures, n.e.s.	12	12	15	0.1	38	40
63	Cork and wood manufactures (excl. furniture)(b)	20	23	20	0.2	50	63
64	Paper, paperboard, and articles of paper pulp, of paper or of paperboard	65	60	64	0.6	175	189
65	Textile yarn, fabrics, made-up articles, n.e.s., and related products	39	44	40	0.4	127	123
66	Non-metallic mineral manufactures, n.e.s.(b)	52	58	107	1.0	243	217
67	Iron and steel(b)	39	70	48	0.5	221	156
68	Non-ferrous metals	641	633	678	6.5	1 542	1 953
69	Manufactures of metals, n.e.s.	67	73	71	0.7	200	212
	<i>Total manufactured goods classified chiefly by material</i>	974	1 019	1 090	10.4	2 729	3 084
7	Machinery and transport equipment(b)						
71	Power generating machinery and equipment	93	72	89	0.9	242	255
72	Machinery specialised for particular industries	103	106	110	1.1	293	320
73	Metal working machinery	13	12	12	0.1	43	38
74	General industrial machinery and equipment, n.e.s. and machine parts, n.e.s.(b)	113	116	128	1.2	315	357
75	Office machines and automatic data processing machines	91	89	94	0.9	344	274
76	Telecommunications and sound recording and reproducing apparatus and equipment	79	67	78	0.7	183	224
77	Electrical machinery, apparatus, appliances, parts (incl. non-electrical counterparts of electrical domestic equipment)	132	153	135	1.3	388	420
78	Road vehicles (incl. air-cushion vehicles)	313	317	350	3.3	1 089	981
79	Transport equipment (excl. road vehicles)	104	64	72	0.7	363	240
	<i>Total machinery and transport equipment</i>	1 042	997	1 069	10.2	3 260	3 108

— nil or rounded to zero (including null cells)

(a) Per cent of total merchandise exports is calculated for the most recent month.

(b) Excludes exports commodities subject to a confidentiality restriction. These are included in Division 98.

						3 MONTHS ENDED SEPTEMBER	
	Jul 2004	Aug 2004	Sep 2004	Per cent of total merchandise exports(a)	2003	2004	
	\$m	\$m	\$m	%	\$m	\$m	
SECTION AND DIVISION OF THE SITC							
8	Miscellaneous manufactured articles(b)						
81	Prefabricated buildings; sanitary, plumbing, heating and lighting fixtures and fittings, n.e.s.	7	8	8	0.1	25	23
82	Furniture, parts thereof; bedding, mattresses, mattress supports, cushions and similar stuffed furnishings	10	13	11	0.1	41	34
83	Travel goods, handbags and similar containers	1	2	2	—	5	5
84	Articles of apparel and clothing accessories	27	33	27	0.3	104	86
85	Footwear(b)	3	4	5	—	14	12
87	Professional, scientific and controlling instruments and apparatus, n.e.s.	111	105	109	1.0	295	326
88	Photographic apparatus, equipment and supplies and optical goods, n.e.s.; watches and clocks	53	52	52	0.5	140	157
89	Miscellaneous manufactured articles, n.e.s.	157	158	171	1.6	475	486
	<i>Total miscellaneous manufactured articles</i>	371	375	385	3.7	1 097	1 130
9	Commodities and transactions not classified elsewhere in the SITC(c)(d)						
93	Special transactions and commodities not classified according to kind	127	190	127	1.2	643	444
95	Gold coin whether or not legal tender, and other coin being legal tender	3	4	20	0.2	24	27
96	Coin (excl. gold coin), not being legal tender	—	—	—	—	—	—
97	Gold, non-monetary (excl. gold ores and concentrates)	507	360	508	4.9	1 413	1 375
98	Combined confidential items excl. some of SITC 280 (exports only) and some of SITCs 510 and 520 (imports only)(c)(d)	435	531	469	4.5	1 325	1 435
	<i>Total commodities and transactions not classified elsewhere in the SITC</i>	1 073	1 085	1 124	10.7	3 404	3 282
	<b>Total Merchandise Exports</b>	<b>10 096</b>	<b>10 417</b>	<b>10 457</b>	<b>100.0</b>	<b>26 640</b>	<b>30 970</b>
	Balance of Payments Adjustments	55	25	88	..	105	168
	Goods Credits (exports) on a Balance of Payments Basis	10 151	10 442	10 545	..	26 745	31 138

.. not applicable

— nil or rounded to zero (including null cells)

(a) Per cent of total merchandise exports is calculated for the most recent month.

(b) Excludes exports commodities subject to a confidentiality restriction. These are included in Division 98.

(c) Includes exports commodities subject to a confidentiality restriction.

(d) Includes small value export entries which can not yet be allocated by commodity.

## INTERNATIONAL MERCHANDISE IMPORTS, By commodity

				Per cent of total merchandise imports(a)	3 MONTHS ENDED SEPTEMBER.....		
	Jul	Aug	Sep		2003	2004	
	2004	2004	2004				
	\$m	\$m	\$m	%	\$m	\$m	
MAJOR COMMODITIES							
333	Crude petroleum oils	735	661	745	5.7	1 407	2 141
334	Refined petroleum oils	281	306	442	3.4	669	1 030
542	Medicaments	472	472	550	4.2	1 170	1 494
641	Paper and paperboard	178	173	176	1.3	529	527
752	Automatic data processing machines	481	439	499	3.8	1 234	1 420
759	Parts and accessories of office machines	193	183	193	1.5	575	569
764	Telecommunications equipment	438	478	450	3.4	994	1 366
781	Passenger motor vehicles	978	803	1 015	7.8	2 813	2 796
782	Motor vehicles for the transport of goods	363	273	363	2.8	705	999
784	Parts and accessories of motor vehicles	195	195	193	1.5	560	583
792	Aircraft and associated equipment	773	235	195	1.5	1 217	1 203
971	Gold, non-monetary	155	190	267	2.0	673	612

## SECTION AND DIVISION OF THE SITC

0	Food and live animals						
00	Live animals other than fish, crustaceans, molluscs and aquatic invertebrates	2	11	4	—	18	17
01	Meat and meat preparations	27	27	23	0.2	47	77
02	Dairy products and birds' eggs	27	29	31	0.2	57	87
03	Fish (not marine mammals), crustaceans, molluscs and aquatic invertebrates, and preparations thereof	72	77	82	0.6	219	231
04	Cereals and cereal preparations	36	40	37	0.3	99	113
05	Vegetables and fruit	90	93	84	0.6	227	267
06	Sugars, sugar preparations and honey	15	15	16	0.1	46	45
07	Coffee, tea, cocoa, spices, and manufactures thereof	59	65	65	0.5	168	188
08	Feeding stuff for animals (excl. unmilled cereals)	32	17	28	0.2	61	77
09	Miscellaneous edible products and preparations	91	80	95	0.7	283	267
	<i>Total food and live animals</i>	<i>450</i>	<i>454</i>	<i>465</i>	<i>3.6</i>	<i>1 226</i>	<i>1 370</i>
1	Beverages and tobacco						
11	Beverages	56	68	80	0.6	188	204
12	Tobacco and tobacco manufactures	21	11	8	0.1	62	40
	<i>Total beverages and tobacco</i>	<i>77</i>	<i>78</i>	<i>88</i>	<i>0.7</i>	<i>251</i>	<i>243</i>
2	Crude materials, inedible, except fuels						
21	Hides, skins and furskins, raw	—	—	—	—	1	1
22	Oil seeds and oleaginous fruits	3	2	3	—	24	8
23	Crude rubber (incl. synthetic and reclaimed)	10	13	12	0.1	30	36
24	Cork and wood	51	59	51	0.4	160	161
25	Pulp and waste paper	16	24	19	0.1	53	59
26	Textile fibres and their wastes (not manufactured into yarn or fabric)	13	14	14	0.1	38	41
27	Crude fertilisers (excl. those of Division 56) and crude minerals (excl. coal, petroleum and precious stones)	13	17	12	0.1	55	41
28	Metalliferous ores and metal scrap	25	26	35	0.3	75	85
29	Crude animal and vegetable materials, n.e.s.	21	19	21	0.2	56	61
	<i>Total crude materials, inedible, except fuels</i>	<i>151</i>	<i>173</i>	<i>168</i>	<i>1.3</i>	<i>492</i>	<i>493</i>
3	Mineral fuels, lubricants and related materials(b)						
32	Coal, coke and briquettes	1	4	1	—	4	5
33	Petroleum, petroleum products and related materials(b)	1 047	1 006	1 215	9.3	2 125	3 268
34	Gas, natural and manufactured	19	22	21	0.2	72	62
	<i>Total mineral fuels, lubricants and related materials</i>	<i>1 067</i>	<i>1 032</i>	<i>1 236</i>	<i>9.4</i>	<i>2 201</i>	<i>3 335</i>

— nil or rounded to zero (including null cells)

(b) Excludes imports commodities subject to a confidentiality restriction. These are included in Division 98.

(a) Per cent of total merchandise imports is calculated for the most recent month.

				Per cent of total merchandise imports(a)	3 MONTHS ENDED SEPTEMBER	
	Jul	Aug	Sep		.....	
	2004	2004	2004		2003	2004
	\$m	\$m	\$m	%	\$m	\$m
SECTION AND DIVISION OF THE SITC						
4	Animal and vegetable oils, fats and waxes					
41	Animal oils and fats	—	3	1	—	12 5
42	Fixed vegetable fats and oils, crude, refined or fractionated	30	30	38	0.3	86 98
43	Fats and oils (processed), waxes and inedible mixtures or preparations, of animal or vegetable origin, n.e.s.	5	3	4	—	11 12
	<i>Total animal and vegetable oils, fats and waxes</i>	36	36	42	0.3	109 115
5	Chemicals and related products, n.e.s.(b)					
51	Organic chemicals	229	190	213	1.6	491 633
52	Inorganic chemicals(b)	73	64	62	0.5	184 199
53	Dyeing, tanning and colouring materials	46	46	48	0.4	128 140
54	Medicinal and pharmaceutical products	565	575	625	4.8	1 458 1 765
55	Essential oils and resinoids and perfume materials; toilet, polishing and cleansing preparations	116	121	141	1.1	334 377
56	Fertilisers (excl. crude)	54	66	68	0.5	99 187
57	Plastics in primary forms	96	98	110	0.8	289 304
58	Plastics in non-primary forms	90	95	96	0.7	254 281
59	Chemical materials and products, n.e.s.	124	130	136	1.0	354 390
	<i>Total chemicals and related products, n.e.s.</i>	1 393	1 385	1 498	11.5	3 591 4 276
6	Manufactured goods classified chiefly by material(b)					
61	Leather, leather manufactures, and dressed furskins, n.e.s.	14	16	14	0.1	43 43
62	Rubber manufactures, n.e.s.(b)	152	151	151	1.2	444 454
63	Cork and wood manufactures (excl. furniture)	53	60	57	0.4	153 170
64	Paper, paperboard, and articles of paper pulp, of paper or of paperboard(b)	218	217	222	1.7	652 657
65	Textile yarn, fabrics, made-up articles n.e.s. and related products	224	241	228	1.7	669 694
66	Non-metallic mineral manufactures, n.e.s.	184	178	190	1.5	533 552
67	Iron and steel(b)	193	231	246	1.9	520 670
68	Non-ferrous metals(b)	82	88	85	0.7	231 255
69	Manufactures of metals, n.e.s.(b)	305	334	315	2.4	797 953
	<i>Total manufactured goods classified chiefly by material</i>	1 423	1 516	1 508	11.5	4 041 4 447
7	Machinery and transport equipment(b)					
71	Power generating machinery and equipment	249	289	343	2.6	792 881
72	Machinery specialised for particular industries	479	492	505	3.9	1 270 1 477
73	Metal working machinery	51	54	49	0.4	183 154
74	General industrial machinery and equipment, n.e.s. and machine parts, n.e.s.	643	766	732	5.6	1 748 2 142
75	Office machines and automatic data processing machines	722	676	746	5.7	1 933 2 143
76	Telecommunications and sound recording and reproducing apparatus and equipment	776	794	814	6.2	1 809 2 385
77	Electrical machinery, apparatus, appliances, parts (incl. non-electrical counterparts of electrical domestic equipment)(b)	611	648	670	5.1	1 730 1 929
78	Road vehicles (incl. air-cushion vehicles)	1 664	1 408	1 713	13.1	4 408 4 785
79	Transport equipment (excl. road vehicles)	823	294	236	1.8	1 366 1 353
	<i>Total machinery and transport equipment</i>	6 018	5 422	5 807	44.4	15 239 17 247

— nil or rounded to zero (including null cells)

(a) Per cent of total merchandise imports is calculated for the most recent month.

(b) Excludes imports commodities subject to a confidentiality restriction. These are included in Division 98.

	Jul 2004	Aug 2004	Sep 2004	Per cent of total merchandise imports(a)	3 MONTHS ENDED SEPTEMBER	
					2003	2004
					\$m	\$m
SECTION AND DIVISION OF THE SITC						
8	Miscellaneous manufactured articles(b)					
81	Prefabricated buildings; sanitary, plumbing, heating and lighting fixtures and fittings, n.e.s.					
	40	45	53	0.4	119	137
82	Furniture, parts thereof; bedding, mattresses, mattress supports, cushions and similar stuffed furnishings					
	164	177	191	1.5	422	532
83	Travel goods, handbags and similar containers					
	48	56	56	0.4	132	160
84	Articles of apparel and clothing accessories					
	353	358	346	2.6	927	1 057
85	Footwear					
	101	102	97	0.7	269	300
87	Professional, scientific and controlling instruments and apparatus, n.e.s.					
	316	322	301	2.3	801	939
88	Photographic apparatus, equipment and supplies and optical goods, n.e.s.; watches and clocks(b)					
	121	125	132	1.0	348	378
89	Miscellaneous manufactured articles, n.e.s.					
	611	693	807	6.2	1 988	2 112
	<i>Total miscellaneous manufactured articles</i>					
	1 755	1 878	1 981	15.1	5 006	5 615
9	Commodities and transactions not classified elsewhere in the SITC(c)					
93	Special transactions and commodities not classified according to kind					
	2	3	3	—	8	8
95	Gold coin whether or not legal tender, and other coin being legal tender					
	—	—	1	—	3	2
96	Coin (excl. gold coin), not being legal tender					
	—	—	—	—	—	—
97	Gold, non-monetary (excl. gold ores and concentrates)					
	155	190	267	2.0	673	612
98	Combined confidential items excl. some of SITC 280 (exports only) and some of SITCs 510 and 520 (imports only)(c)					
	21	14	14	0.1	82	50
	<i>Total commodities and transactions not classified elsewhere in the SITC</i>					
	179	207	286	2.2	766	672
	<b>Total Merchandise Imports</b>					
	<b>12 550</b>	<b>12 182</b>	<b>13 081</b>	<b>100.0</b>	<b>32 923</b>	<b>37 813</b>
	Balance of Payments Adjustment					
	-112	132	38	..	459	58
	Goods Debits (imports) on a Balance of Payments Basis					
	12 438	12 314	13 119	..	33 382	37 871

.. not applicable

— nil or rounded to zero (including null cells)

(a) Per cent of total merchandise imports is calculated for the most recent month.

(b) Excludes imports commodities subject to a confidentiality restriction. These are included in Division 98.

(c) Includes imports commodities subject to a confidentiality restriction.

	EXPORTS				IMPORTS				BALANCE OF MERCHANDISE TRADE	
	2003-04	September	3 months ended	3 months ended	2003-04	September	3 months ended	3 months ended	2003-04	3 months ended
		2004	September	September		September	2004	September		September
	\$m	\$m	\$m	\$m	\$m	\$m	\$m	\$m	\$m	\$m
Belgium(b)	676	69	144	195	1 237	99	284	286	-561	-91
Brazil	512	55	142	142	494	55	125	162	18	-20
Canada	1 816	202	384	490	1 818	145	486	460	-2	30
China	9 937	961	2 277	2 778	15 338	1 768	3 861	5 041	-5 400	-2 263
Denmark	167	11	32	42	856	83	190	243	-690	-201
Egypt(c)	649	23	27	99	36	2	5	4	614	95
Fiji	430	35	117	103	210	22	54	63	220	40
Finland	575	28	127	145	651	59	164	180	-76	-36
France	939	83	249	259	3 816	275	767	1 235	-2 877	-976
Germany	1 309	131	297	344	7 985	702	2 039	2 136	-6 676	-1 792
Hong Kong (Sar of China)	2 753	236	718	680	1 202	120	278	349	1 551	331
India	4 865	495	899	1 203	1 000	114	250	326	3 865	878
Indonesia	2 984	306	744	942	3 765	296	957	795	-781	147
Iran	125	16	35	44	43	2	18	5	82	40
Iraq	315	37	1	140	—	—	—	6	315	134
Ireland	172	27	45	60	1 686	176	437	488	-1 514	-427
Israel	160	12	60	43	470	55	110	139	-310	-97
Italy	1 375	146	337	374	4 215	322	1 067	1 133	-2 840	-759
Japan	19 821	2 076	4 944	6 159	16 100	1 588	4 089	4 422	3 721	1 737
Korea, Republic of	8 489	760	1 994	2 450	4 877	461	1 170	1 327	3 613	1 124
Kuwait	580	44	161	124	110	4	21	39	470	85
Malaysia	2 224	231	510	665	4 707	564	1 134	1 461	-2 483	-795
Mexico	341	39	108	117	603	66	156	180	-262	-63
Netherlands	1 368	118	339	412	1 197	103	295	330	171	82
New Zealand	8 093	776	2 147	2 394	5 056	460	1 315	1 327	3 037	1 068
Pakistan	438	49	111	90	161	11	38	38	277	52
Papua New Guinea	809	70	217	246	1 422	154	359	367	-613	-121
Philippines	938	84	211	230	762	64	206	197	175	33
Saudi Arabia	1 992	145	483	441	757	86	126	326	1 235	116
Singapore	3 061	281	728	823	5 111	620	1 070	1 626	-2 050	-802
South Africa	1 427	101	322	379	1 246	113	304	306	182	73
Spain	659	68	166	175	1 103	134	291	395	-444	-220
Sweden	228	28	81	65	1 739	144	407	448	-1 511	-383
Switzerland	181	10	50	70	1 190	147	276	401	-1 009	-331
Taiwan	3 705	376	866	1 041	3 396	330	863	916	309	126
Thailand	2 463	263	566	676	3 674	344	908	986	-1 212	-310
Turkey	277	10	55	52	262	37	51	96	16	-44
United Arab Emirates	1 185	137	266	395	742	119	188	356	443	39
United Kingdom	5 145	493	1 763	1 634	5 430	539	1 381	1 515	-285	119
United States of America	9 482	811	2 452	2 429	19 930	1 973	5 404	5 587	-10 448	-3 159
Viet Nam	512	66	86	196	2 019	251	604	729	-1 506	-533
Other Countries(d)	5 858	547	1 380	1 624	4 591	476	1 175	1 390	1 267	234
<b>Total</b>	<b>109 036</b>	<b>10 457</b>	<b>26 640</b>	<b>30 970</b>	<b>131 006</b>	<b>13 081</b>	<b>32 923</b>	<b>37 813</b>	<b>-21 969</b>	<b>-6 843</b>
APEC	77 828	7 587	19 048	22 453	91 081	9 326	23 163	26 118	-13 254	-3 665
ASEAN	12 273	1 243	2 866	3 563	20 555	2 209	4 989	5 971	-8 282	-2 407
Developing Countries	52 824	5 019	12 078	14 545	52 077	5 664	12 804	15 946	747	-1 401
Least Developed Countries	1 183	123	268	400	213	22	53	53	970	346
European Union(e)	12 949	1 235	3 650	3 791	31 501	2 812	7 723	8 886	-18 552	-5 095
OECD	61 412	5 916	15 775	17 946	81 844	7 742	20 809	22 824	-20 433	-4 879

— nil or rounded to zero (including null cells)

(a) See AusStats for details of all countries.

(b) Prior to July 2003, Belgium and Luxembourg were combined.

Belgium-Luxembourg is included in 'Other Countries' up to and including June 2003.

(c) Exports of Alumina to Egypt are excluded from its country total and included in the 'Other countries' category.

(d) Includes small value export entries which can not yet be allocated by country.

(e) From July 2004, European Union includes 25 member countries.

	2003-04	Sep 2004	3 MONTHS ENDED SEPTEMBER	
			2003	2004
			\$m	\$m
EXPONENTS (a)				
New South Wales	19 097	1 933	4 501	5 607
Victoria	18 012	1 635	4 313	4 825
Queensland	20 126	2 164	4 961	6 400
South Australia	7 608	653	1 873	2 016
Western Australia	32 287	3 119	7 868	9 084
Tasmania	2 317	165	611	563
Northern Territory	1 883	206	477	583
Australian Capital Territory	1	—	1	—
State not available for publication(b)(c)	344	28	81	93
Re-exports	7 362	554	1 954	1 800
<b>Total exports</b>	<b>109 036</b>	<b>10 457</b>	<b>26 640</b>	<b>30 970</b>
IMPORTS				
New South Wales	53 768	5 482	13 745	15 494
Victoria	40 730	3 903	10 198	11 606
Queensland	18 080	1 887	4 557	5 383
South Australia	5 163	498	1 309	1 429
Western Australia	11 690	1 138	2 798	3 329
Tasmania	669	46	142	137
Northern Territory	900	126	174	432
Australian Capital Territory	7	—	2	2
<b>Total imports</b>	<b>131 006</b>	<b>13 081</b>	<b>32 923</b>	<b>37 813</b>

— nil or rounded to zero (including null cells)

(a) State in which the final stage of production or manufacture occurs.

(b) Includes exports which can not yet be allocated by state. These shipments will be appropriately classified as more details become available.

(c) Exports of Alumina to Bahrain, Egypt and Iceland are excluded from the state totals and included in 'State not available for publication' category.



## PERIOD AVERAGE EXCHANGE RATES(a): Per Australian Dollar

<i>Period</i>	<i>United States dollar</i>	<i>United Kingdom pound</i>	<i>euro</i>	<i>Japanese yen</i>	<i>Trade-weighted index of value of the \$A(b)</i>
FINANCIAL YEAR					
<b>2001-02</b>	0.5239	0.3632	0.5850	66.10	50.7
<b>2002-03</b>	0.5848	0.3685	0.5577	70.01	53.5
<b>2003-04</b>	0.7137	0.4102	0.5981	78.91	61.5
MONTHS					
<b>2003</b>					
July	0.6621	0.4074	0.5820	78.57	58.9
August	0.6512	0.4086	0.5843	77.32	58.2
September	0.6614	0.4107	0.5891	76.11	58.5
October	0.6941	0.4138	0.5928	75.98	60.1
November	0.7159	0.4238	0.6118	78.19	61.9
December	0.7383	0.4223	0.6018	79.62	63.0
<b>2004</b>					
January	0.7695	0.4227	0.6101	81.89	64.8
February	0.7777	0.4165	0.6152	82.84	65.2
March	0.7498	0.4100	0.6110	81.45	63.6
April	0.7442	0.4121	0.6201	79.98	63.3
May	0.7054	0.3948	0.5874	79.01	60.9
June	0.6942	0.3794	0.5714	75.90	59.5
July	0.7164	0.3887	0.5835	78.29	61.1
August	0.7104	0.3903	0.5828	78.37	60.8
September	0.7013	0.3912	0.5743	77.20	59.9

- (a) These exchange rates and the trade-weighted index are derived using rates provided by the Reserve Bank of Australia in respect of each trading day.
- (b) May 1970=100. The trade-weighted index is reweighted annually (on 1 October) and on special occasions if required.

## EXPLANATORY NOTES

### INTRODUCTION

**1** This publication presents preliminary estimates of Australia's international trade in goods and services on a balance of payments basis and merchandise import and export statistics on a recorded trade basis.

**2** Merchandise trade statistics on a recorded trade basis are compiled from information submitted by exporters and importers or their agents to the Australian Customs Service (ACS). Adjustments for coverage, timing and valuation are made to recorded trade data to convert them to a balance of payments basis. The main source for services data is the quarterly Survey of International Trade in Services.

**3** More comprehensive quarterly estimates of Australia's trade in goods and services, together with comprehensive details of Australia's balance of payments are included in the quarterly publication, *Balance of Payments and International Investment Position, Australia* (cat. no. 5302.0). Detailed monthly statistics on merchandise trade are available on AusStats or by subscription to tailored services.

### CONCEPTS, SOURCES AND METHODS

**4** The conceptual framework used in compiling Australia's merchandise trade statistics can be found in *International Merchandise Trade, Australia: Concepts, Sources and Methods, 2001* (cat. no. 5489.0).

**5** The conceptual framework used in compiling Australia's balance of payments statistics is based on the Fifth Edition of the International Monetary Fund's *Balance of Payments Manual* (BPM5,1993). Descriptions of the underlying concepts and structure of the balance of payments and the sources, methods and terms used in compiling the estimates are presented in *Balance of Payments and International Investment Position, Australia: Concepts, Sources and Methods, 1998* (cat. no. 5331.0). To bring merchandise trade statistics on a recorded trade basis to a balance of payment basis, timing adjustments are made to ensure that the transaction is recorded in the period in which ownership changed, rather than in the period in which the transaction was recorded by ACS. Adjustments are also made to imports to take account of distortions which arise when significant changes occur in the volume of import entries lodged but not yet processed by ACS in a given month. Chapter 6 of cat. no. 5331.0 provides more detail on the relationship between statistics on international merchandise trade on a recorded trade basis and on a balance of payments basis.

**6** Both of the Concepts, Sources and Methods publications are available for free from the ABS web site, see <<http://www.abs.gov.au>> – select *About Statistics* then *Concepts & Classifications*.

### SEASONAL ADJUSTMENT

**7** Monthly original estimates are volatile, being subject to calendar-related and large irregular influences. Seasonally adjusted estimates are derived by estimating and removing systematic calendar related effects, such as seasonal and trading day influences, from the original series. Seasonal adjustment does not aim to remove the irregular or non-seasonal influences which may be present in any particular month. These irregular influences may reflect both random economic events and difficulties of statistical recording. The estimates of international trade in goods and services on a balance of payments basis are seasonally adjusted. The merchandise exports and imports statistics on a recorded trade basis are not.

### TREND ESTIMATES

**8** The month-to-month movements of the seasonally adjusted estimates may not be reliable indicators of trend behaviour because they include irregular or non-seasonal movements. Trend estimates are derived by applying a 13-term Henderson moving average to the seasonally adjusted series. The use of a 13-term Henderson average can result in revisions to the estimates for the most recent six months as additional observations become available. Revisions can also occur because of changes in the original data and as a result of the annual re-estimation of the seasonal factors.

## EXPLANATORY NOTES *continued*

### SIGN CONVENTION

**9** In keeping with balance of payments conventions, where statistics are on a balance of payments basis, credit entries (exports) are shown without sign and debit items (imports) are shown as negative entries. For statistics on a recorded trade basis, both imports and exports are shown without sign. The calculation of percentage changes on balance of payments debit items are made without regard to sign. References to balance of payments debit items in Key Figures, Key Points, and Analysis and Comments are also made without regard to sign.

### COMMODITY BREAKDOWNS OF GOODS

**10** For details of the classification used for goods exports on a balance of payments basis (credits), see table 6.6 in *Balance of Payments and International Investment Position, Australia: Concepts, Sources and Methods, 1998* (cat. no. 5331.0).

**11** Details of the classification of goods imports on a balance of payments basis (debits) are provided in table 6.7 in cat. no. 5331.0. Most of the commodity groups shown in table 4 for goods debits are available for more detailed subgroups from AusStats.

**12** The recorded trade statistics shown in tables 8 and 9 are classified by the Standard International Trade Classification 2 (SITC). The first section of tables 8 and 9 show the most significant commodities (by value) at the SITC 3 digit level.

### COMMODITY BREAKDOWNS OF SERVICES

**13** The quarterly detailed services data published in table 7 are consistent with the monthly aggregates shown in table 5. Services trade data by major partner countries and by Australian state of production/consumption are published on a financial year basis and a calendar year basis.

**14** Monthly indicators for many of the services components that are only surveyed quarterly are not available. In particular, the Freight and Other transportation components of Total services credits are not available for publication on a monthly basis. The estimates for these items shown in table 5 are therefore derived by dividing the quarterly estimate by three. Where quarterly survey data are not available, freight debits are derived directly from imports data for the reference month as a difference between total merchandise cost, insurance and freight (CIFE) and free on board (FOB), adjusted to reflect timing and processing adjustments. For freight credits and other transportation credits and debits, estimates are derived by extrapolating the last month's data by an average of movements for the same month over the three previous years.

### TOURISM RELATED SERVICES

**15** The tourism related services memorandum items provide timely indicators of the movements in tourism related activities, not an absolute measure of the level of these activities. These series are not compiled on a Balance of Payments conceptual basis. However, they do provide a reasonable approximation of world tourism related activities.

**16** The memorandum items have been derived by re-aggregating relevant components of the international trade in services series of the balance of payments accounts. The tourism related indicator has been derived by combining total travel services (business, education-related and other personal travel), passenger fares, and the air transport component of other transportation services which relates to agency fees and commission receipts.

### RELATED PRODUCTS OR SERVICES

**17** More detailed balance of payments and recorded merchandise trade data, including forward seasonal factors, are available from AusStats. Very detailed merchandise trade data by commodity, country and state are available by contacting the National Information and Referral Service, as shown on the back of this publication.

**18** Users may also wish to refer to the following publications which are available from ABS Bookshops and on the ABS web site:

- *Balance of Payments and International Investment Position, Australia* (cat. no. 5302.0) – issued quarterly

## EXPLANATORY NOTES *continued*

### RELATED PRODUCTS OR SERVICES *continued*

- *International Merchandise Imports, Australia* (cat. no. 5439.0) – issued monthly
- *International Trade Price Indexes, Australia* (cat. no. 6457.0) – issued quarterly
- *Balance of Payments and International Investment Position, Australia: Concepts, Sources and Methods* (cat. no. 5331.0)
- *Information Paper: Quality of Australian Balance of Payments Statistics* (cat. no. 5342.0)
- *International Merchandise Trade, Australia: Concepts, Sources and Methods* (cat. no. 5489.0)
- *A Guide to Australian Balance of Payments and International Investment Position Statistics* (cat. no. 5362.0.55.001).

**19** The last four publications are available for free on the ABS web site <<http://www.abs.gov.au>> – select *About Statistics* then *Concepts & Classifications*.

### CAUTIONARY NOTE

**20** The tables in this publication are presented on two bases. Tables 1–7 contain estimates of Australia's international trade in goods and services which have been adjusted for coverage, valuation and timing to a balance of payments basis. Tables 8–11 contain estimates of merchandise exports and imports based on Australian Customs Service records. Paragraph 5 of the Explanatory Notes provides an explanation of the difference between these bases.

### ABBREVIATIONS

ABS	Australian Bureau of Statistics
ACS	Australian Customs Service
APEC	Asia Pacific Economic Co-operation
ASEAN	Association of South-East Asian Nations
n.e.s.	not elsewhere specified
n.i.e.	not included elsewhere
OECD	Organisation for Economic Co-operation and Development
SAR	Special Administrative Region
SITC	Standard International Trade Classification

## APPENDIX RELATED ARTICLES

<i>Article</i>	<i>Source</i>	<i>Issue</i>
<b>Investment</b>		
Gross external debt	5302.0	Sep qtr 2003
Foreign ownership of equity	5302.0	Sep qtr 2003
Measuring Australia's foreign currency exposure	5302.0	Dec qtr 2001
<b>Balance of payments</b>		
International comparison of balance of payments statistics	5363.0	1999–2000
The Sydney Olympic Games	5302.0	Sep qtr 1999
The Sydney Olympic Games Update	5368.0	Jul 2000
<b>Merchandise trade</b>		
Australia's Trade with the USA	web site	Mar 2004
Australia's Exporters, 2002–03	web site	Oct 2003
Australia's Importers, 2002–03	web site	Nov 2003
Export and import currencies, 2003	web site	May 2003
Australia's exporters and importers, 2001–02	5422.0	Dec qtr 2002
Trade through Australia's ports	5422.0	Sep qtr 2002
Australia's trade in wine	5422.0	Dec qtr 2001
Australia's export markets, 1991–92 to 2000–01	5422.0	Jun qtr 2001
Major commodities traded by Australia, 1991 to 2000	5422.0	Dec qtr 2000
Australia's trade in crude petroleum	5422.0	Mar qtr 2000
Australia's merchandise trade with the Republic of Korea	5422.0	Sep qtr 1999
Australia's merchandise trade with Japan	5422.0	Mar qtr 1999
Bilateral merchandise trade statistics reconciliation: Australia and the European Union, 1992 to 1997	5422.0	Sep qtr 1998
<b>Trade in services</b>		
International trade in services by partner country, 2003	web site	Mar 2004
International trade in services by State, 2003	web site	Mar 2004
International trade in services by partner country, 2002–03	web site	Oct 2003
International trade in services by State, 2002–03	web site	Oct 2003
Goods and services by region, 2001	5368.0	Feb 2002
International trade in education services	web site	Oct 2002
<b>Finance</b>		
Recent trends in construction and first home buyers finance	5609.0	Mar 2002
Household sector data in the financial accounts	5232.0	Mar qtr 2002
Investment Managers	5655.0	Jun qtr 2000
Venture capital, 1999–2000	5611.0	2000–01
Impact of 2003–2004 farm season on Australian production	5611.0	1999–2000
<b>Globalisation</b>		
Economic Activity of Foreign Owned Businesses in Australia, 2000–01	5494.0	2000–01
Foreign Ownership of Australian Exporters and Importers, 2002–03	5496.0	2002–03
Australian Outward Foreign Affiliates Trade, 2002–03, Experimental	web site	2002–03
<b>Technical information</b>		
Changes to country and port classifications	5368.0	May 2003
The effect of customs changes on export statistics	5422.0	Jun qtr 2002
Harmonized system changes	5422.0	Sep qtr 2001
International trade review: data quality and client queries	5422.0	Jun qtr 2000
Data confidentiality	5422.0	Dec qtr 1999





## FOR MORE INFORMATION . . .

- INTERNET* **www.abs.gov.au** the ABS web site is the best place to start for access to summary data from our latest publications, information about the ABS, advice about upcoming releases, our catalogue, and Australia Now—a statistical profile.
- LIBRARY* A range of ABS publications is available from public and tertiary libraries Australia-wide. Contact your nearest library to determine whether it has the ABS statistics you require, or visit our web site for a list of libraries.
- CPI INFOLINE* For current and historical Consumer Price Index data, call 1902 981 074 (call cost 77c per minute).
- DIAL-A-STATISTIC* For the latest figures for National Accounts, Balance of Payments, Labour Force, Average Weekly Earnings, Estimated Resident Population and the Consumer Price Index call 1900 986 400 (call cost 77c per minute).

## INFORMATION SERVICE

Data already published that can be provided within five minutes will be free of charge. Our information consultants can also help you to access the full range of ABS information—ABS user pays services can be tailored to your needs, time frame and budget. Publications may be purchased. Specialists are on hand to help you with analytical or methodological advice.

- PHONE* 1300 135 070
- EMAIL* [client.services@abs.gov.au](mailto:client.services@abs.gov.au)
- FAX* 1300 135 211
- POST* Client Services, ABS, GPO Box 796, Sydney NSW 2001

## WHY NOT SUBSCRIBE?

ABS subscription services provide regular, convenient and prompt deliveries of selected ABS publications and products as they are released. Email delivery of monthly and quarterly publications is available.

- PHONE* 1300 366 323
- EMAIL* [subscriptions@abs.gov.au](mailto:subscriptions@abs.gov.au)
- FAX* (03) 9615 7848
- POST* Subscription Services, ABS, GPO Box 2796Y, Melbourne Vic 3001



2536800009045

ISSN 1328 2778

RRP \$20.00

© Commonwealth of Australia 2004

Produced by the Australian Bureau of Statistics